

processed through the optical scan vote tabulator.

- Return your security cover to the ballot box judge and receive an “I Voted” sticker.
- Retain your Application stub as proof of voting.

## Step 5-Election Results

- Results of the election will be determined when the polling places close and votes are reported to the election authority.
- Results will be reported on the BEC website and through news media.

## Optical Scan Voting is Here in Bloomington

There will be a change in the way you cast your ballot in the City of Bloomington. The Board of Election Commissioners has chosen a new voting system that is easy to use, accurate, and secure, and we began use at the March 16, 2004 General Primary Election.

Voting by optical scan ballot and submitting your vote to an automated optical scanning tabulation unit is simple and easy to understand. You will use the same fill-in-the-oval method as used on many school tests or application forms. The ballot is printed on paper and is clear and easy to read. Features of the optical scan voting system include:

- The ballot is printed on paper and

marked with a dark marking pen which is readable by the optical scan unit.

- The tabulator unit will reject the ballot if you have overvoted in a race—unless you choose to cast the overvoted ballot by having the judge override the rejection.
  - Because of battery backups in case of power failure, your vote will always be counted in the tabulator unit, while your paper ballot is secured in the locked tabulator unit base.
  - The efficiency of this new technology gives us the opportunity to combine precinct polling places for 2004.
- The Board of Elections is looking forward to bringing this new technology to the citizens of Bloomington.

Bloomington Board of Election  
Commissioners  
200 W. Front St., Suite 400-D  
Bloomington, IL 61701  
Phone: 309-888-5136  
Fax: 309-888-5776  
Email: [becvote@becvote.org](mailto:becvote@becvote.org)



*Register and vote ~  
Elections are our only business*

*We're on the Web  
[www.becvote.org](http://www.becvote.org)*

August 2005

## City of Bloomington Board of Election Commissioners



.....

## Voter's Instructions for New Optical Scan Voting Systems

.....

# VOTING INSTRUCTIONS



## Step 1-Application to Vote

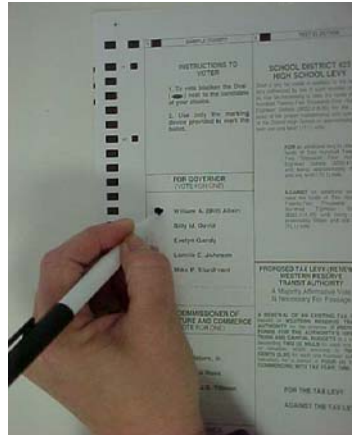
- Upon entering the polling place, give your name to the judge. Your name and address will be verified. If your name or address information is incorrect, or if no registration is found, the judge will find out if you are still eligible to vote.
- Follow judge's instructions to complete your Application to Vote and sign your Application.
- Judges will verify the signature and initial the Application.



## Step 2-Receive your Ballot

- A ballot judge will locate the proper ballot style corresponding to the Application stub. You will be given the ballot, a marker and a security cover.
- You should verify that the ballot style printed on the ballot matches the style on the Application stub. If the ballot doesn't match the stub, notify a judge and you will be given the correct ballot style.

## Step 3-Vote the Ballot



completely fill in the oval next to the write-in line, and then actually write in the candidate's name. Do not write a candidate's name if he/she is already listed on the ballot.

- Do not make a check mark or an X in the oval.
- Do not circle the candidate's name.
- Check the ballot to see that you have voted for the correct number of candidates. You should not vote for more than the allowed number of candidates per office.
- You do not need to vote for every office.
- Check both sides of the ballot sheet to be sure you have voted in every election race or referendum you choose.
- If you have torn or marked the ballot in the wrong space, return the ballot to the judge and receive a new ballot.

- Enter the next available voting booth.
- Vote by completely filling the oval next to the candidate of your choice with the marker.
- If you choose to vote for a write-in candidate,

- When you have finished, place the ballot inside the security cover and take to the optical scan vote tabulator.

## Step 4-Submit your Vote

- Remove the security cover and lay the ballot on the tabulator. Insert into the tabulator machine.
- Read the information screen to verify that the ballot has been accepted.



- IF the screen indicates that the ballot has been rejected, inform the ballot box judge that the ballot was not accepted. The judge will help determine the cause, such as voting for more than the allowed number of candidates. If you choose to have the over-voted ballot tabulated, the judge will override the rejection. Any over-voted office or referendum will not be counted, but remaining offices or referenda will count.
- IF you wish to correct your ballot, the judge will direct you to obtain a new ballot.
- The ballot will be counted and